



Egerton Gardens, W13

An impressive and imposing Edwardian, halls-adjointing, four-bedroom, semi-detached home, with forecourt parking.

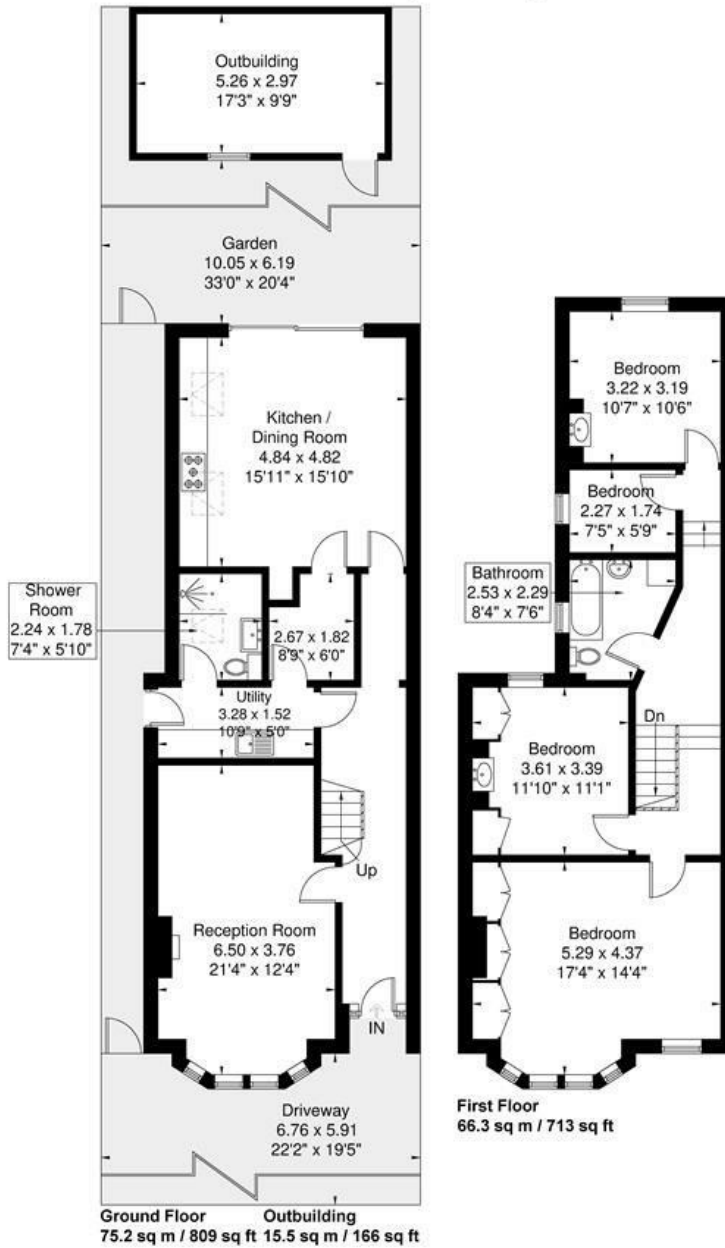
Located in the St Stephens area of Ealing, an area famed for its quiet, tree-lined residential roads stretching from Castlebar Hill to The Avenue in the West.

- Semi-detached family home
- Four bedrooms
- Fully integrated kitchen
- Off-street parking
- Mature and peaceful garden
- Fully insulated and soundproofed studio
- Prime W13 location
- Great schools nearby
- Potential to expand into loft
- Elizabeth line close by

£1,395,000

Egerton Gardens

Approximate Gross Internal Area = 141.5 sq m / 1522 sq ft
 Outbuilding = 15.5 sq m / 166 sq ft
 Total = 157 sq m / 1688 sq ft



Although every attempt has been made to ensure accuracy, all measurements are approximate.
 The floorplan is for illustrative purposes only and not to scale.
 © www.perspective.co.uk

